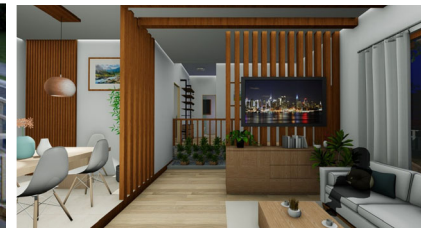
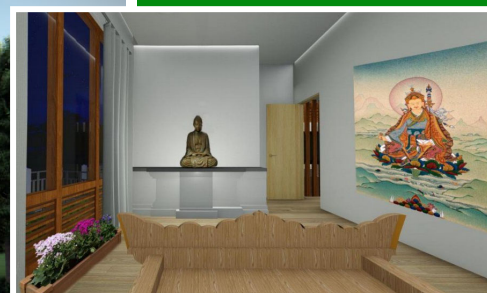


VAJRA RESIDENCY

Builder you can trust!





We are pleased to announce the launch of Vajra Residency—an affordable housing solution to those who are dreaming of a place to call home.




VAJRA

CONTACT US

 www.vajrabhutan.com

 +975 17171776

 Post Box No. 1237, Debsi, Thimphu

We provide two types of homes for you to choose from: Type I—Bungalow; and Type II—Duplex. Each type consists of the following three different plans:

Features	Zimchu Thama (Standard Plan)	Zimchu Ding (Deluxe Plan)	Zimchu Rab (Premium Plan)
• Structure	Steel composite frame	Steel composite frame	Steel composite frame
• Roofing	PPGI sheet roofing	PPGI sheet roofing	PPGI sheet roofing
• Ceiling	Plain fiber cement board with <i>cham</i> design ceiling in the sitting room area.	Plain fiber cement board with <i>cham</i> design in sitting room and cove ceiling in dining area.	Plain fiber cement board with <i>cham</i> design in sitting and cove ceiling in dining, bedrooms and <i>choesham</i> .
• Walls	Plain fiber cement board both external and interior. Half-height wall tiles in kitchen and bathrooms.	Plain cement fiber board in exterior and stone-clad cement fiber board in interior. Full-height wall tiles in kitchen and bathrooms.	Plain cement fiber board in exterior and plain cement fiber board with 1.0m height timber paneling in interior. Full-height digital print wall tiles in bathrooms and kitchen.
• Flooring	Bathrooms, corridor and kitchen—tiles; internal steps—granite; open deck and porch—tiles; rest—timber flooring.	Bathroom and kitchen—tiles; internal steps and corridor—granite; open deck and porch—tiles; rest—laminated flooring.	Bathroom and kitchen—tiles; internal steps and corridor—granite; open deck and porch—tiles; rest—laminated flooring.
• Heating and cooling system	Ceiling fan and provision for external heaters.	Split AC	HVAC
• Finishing work	Ceiling and wall—smooth finish with distemper.	Ceiling—putty finish and paints; Walls—plastic emulsion paints.	Ceiling—putty finish and paints; Walls—plastic emulsion paints.
• Kitchen	Normal kitchen slab with granite top with built-in under cabinet and sink	Modular kitchen - with standard chimney and sink	Modular kitchen - with standard chimney and sink
• Plumbing works	Pipes- Astral/equivalent PEX pipes system. Standard plumbing fittings	Pipes- Astral/equivalent PEX pipes system. Standard plumbing fittings	Pipes- Astral/equivalent PEX pipes system. Standard plumbing fittings
• Sanitary fittings	WC, wash basin, basin mixer, health faucet, kitchen sink- CERA /equivalent make. SS overhead shower and mixer.	WC, wash basin, basin mixer, health faucet, kitchen sink- CERA/equivalent make. SS overhead shower and mixer. CITADEL bathtub.	WC, wash basin, basin mixer, health faucet, kitchen sink- CERA/equivalent make. SS overhead shower and mixer. CERATON bathtub.
• Electrical works	All switch gears - legrand, Light fittings - Jaguar / equivalent- Standard fittings. Exhaust fan- on Ceiling with exhaust pipe	All switch gears - legrand, Light fittings - Jaguar / equivalent- High-end fittings. Exhaust fan- on Ceiling with exhaust pipe	All switch gears - legrand, Light fittings - Jaguar / equivalent- High-end fittings with cove lights. Exhaust fan- on Ceiling with exhaust pipe
• External works	Plinth protection - PCC with drain	Plinth protection - <i>kaddapa</i> finish with drain	Plinth protection - <i>kaddapa</i> finish with drain
• Others	Provisions for CCTV, WIFI and TV networks.	4 nos. CCTV, 1 WIFI router, TV networks.	4 nos. CCTV, 1 WIFI router, TV networks
• Plinth Area Rate (Nu/Square Feet)	3450.00	5225.00	5915.00
• Construction Duration	6-8 months	6-8 months	6-8 months

WHY VAJRA RESIDENCY?

1. Sustainable and energy-efficient buildings.
2. Reduced cost and duration of construction.
3. Free maintenance service for five years.

As part of our launch, we are offering the development of front lawn free of cost for the first five customers.

‘Open House’ launch coming soon!